

Fire Season Restrictions

During the summer and fall, high fire danger may limit OHV use to forest roads only. Other fire season restrictions, such as limits on campfire use, may also be in place. For information about current fire season restrictions, check our website or call:

Business Hours	After Hours Recordings
Forest Grove (503) 357-2191	(503) 359-7401
Tillamook (503) 842-2545	(503) 842-2548

Recreation Website & Hotline

Website - www.oregon.gov/ODF/Recreation/pages/MotorizedTrails.aspx
 Tillamook State Forest Blog - tillamookstateforest.blogspot.com
 Oregon State Parks Website - www.oregon.gov/oprd/pages/index.aspx
 Oregon ATV Program Website - www.oregonOHV.org
 Oregon State Parks ATV Hotline - 877-772-3359

For More Information Contact

Oregon Department of Forestry

Forest Grove Office 801 Gales Creek Rd Forest Grove, OR 97116 (503) 357-2191	Tillamook Office 5005 3rd Street Tillamook, OR 97141 (503) 842-2545	Tillamook Forest Center 45500 Wilson River Hwy Tillamook, OR 97141 (866) 930-4646
--	---	---



To report a fire, a crime, or an emergency CALL 911

Tillamook State Forest

Off-Highway Vehicle Trail Map



WELCOME

The Tillamook State Forest offers some of the most fun and challenging Off-Highway Vehicle (OHV) trails in the Pacific Northwest. The Browns Camp, Jordan Creek, and Diamond Mill OHV areas combine to provide more than 250 miles of riding opportunity through some of the more scenic areas of the forest. In addition to trails, OHV campgrounds and staging areas provide overnight and day use opportunities. Ride and drive responsibly and enjoy your visit to the Tillamook State Forest.

- Browns Camp OHV Area** - Easy to difficult trails open to motorcycles, quads, side by sides and 4WD
- Jordan Creek OHV Area** - Moderate to difficult trails open to motorcycles, quads, side by sides and 4WD
- Diamond Mill OHV Area** - Mostly difficult technical single track trails for motorcycle use

Changing Trail Conditions

Many of the Tillamook State Forest OHV trails are open year round. Trail conditions or difficulty levels may differ from what is shown on the map because of seasonal conditions. Individual trails may be closed at any time due to forest management operations, ongoing project work, fire danger, or to prevent trail damage. **To help protect the trails please avoid using them during periods of heavy rainfall.**

Check the trail signs, forest information boards, and the Tillamook State Forest website for trail information or for posted closures.
www.oregon.gov/ODF/tillamookstateforest/pages/ohvtrailreport.aspx

How You Can Help

The Oregon Department of Forestry invites you to become involved in the Tillamook State Forest Off-Highway Vehicle Program. The ongoing commitment of dedicated volunteers helps to promote a positive image of responsible off-highway vehicle use and to ensure the future of the sport in the Tillamook State Forest. Contact us for more information.

State Forest Recreation Fund

The Oregon Department of Forestry has partnered with the non-profit Tillamook Forest Heritage Trust to make it possible for the public to make tax deductible donations to support State Forest OHV trails, facilities and volunteer opportunities through the State Forests Recreation Fund. For more info go to www.tillamooktrust.org/donate



Tread Lightly! Protect Your Riding Opportunities

The Oregon Department of Forestry supports the Tread Lightly! Program and encourages OHV enthusiasts to follow the Tread Lightly! principles when using OHV trails in the Tillamook State Forest. The trails in the Tillamook State Forest are created and maintained for your use and enjoyment by local OHV clubs and the Oregon Department of Forestry. To protect the resource and to enhance your riding experience, regulations governing OHV use on State Forest land have been adopted. Law enforcement officers enforce these regulations throughout the forest.

Travel responsibly

- Stay on designated trails. Don't create side routes around obstacles.
- Respect trail designations and closures.

Respect the rights of others

- Share the trails. Be courteous when encountering others.

Educate yourself

- Ride and drive within your ability. Know your limits. Know the regulations.

Avoid sensitive areas

- Stay out of creeks, streams, and other waterways.
- Don't ride on road side cutbanks.

Do your part

- Pack out your garbage.
- Promote a positive image by following all rules and operation requirements.
- Maintain your equipment with required USFS approved spark arrestors and at the maximum 99 decibels.



OPERATOR REQUIREMENTS AND ATV CLASSIFICATIONS

Off-Highway Vehicle (OHV) riding and driving are exciting and fun sports that come with a certain level of risk. The Oregon Department of Forestry requires that all OHV users follow state regulations and strongly encourage all riders and drivers to wear the proper protective equipment appropriate for their sport such as: a helmet, goggles, gloves, chest protector, elbow pads, boots, and shin guards. Riders and drivers should operate responsibly using properly maintained and equipped vehicles.

Oregon has four classes of All-Terrain Vehicles (ATVs) as defined below. The operator requirements for each class of ATV can be found online at the Oregon State Parks ATV Program website, posted on information kiosks in the Tillamook State Forest OHV staging areas, or in the State Parks Oregon OHV Guide which is available at Tillamook State Forest District offices and at the Tillamook Forest Center.

Quads – Class I ATV

- For vehicles 50 inches wide or less
- Dry weight of 1,200 pounds or less
- Uses handlebars for steering
- Has a seat designed to be straddled
- Travels on three or more pneumatic tires that are 6" or more in width and has wheels with a rim diameter 14" or less



Motorcycles – Class III ATV

- Travels on two tires and is actually being operated off-highway



Side-by-Sides - Class IV ATV

- Is 80 inches wide or less at its widest point
- Has a dry weight of 2,500 pounds or less
- Has nonstraddle seating
- Has a steering wheel for steering control
- Travels on four or more pneumatic tires that are 6" or more in width and has wheels with a rim diameter 14" or less



Four-Wheel Drives – Class II ATV

- Weights more than or is wider than a Class I ATV
- Is not a Class IV ATV
- Is actually being driven off road



GENERAL INFORMATION

ATV Permit Requirements

An ATV permit sticker is required for each class of OHVs in order to operate on public lands. USFS approved spark arrestors are required for Class I, Class III, and Class IV vehicles.

Where To Get An ATV Permit

ATV permits are available online at <https://store.oregonstateparks.org> and at some of the stores along Highway 6, the Tillamook Forest Center and Oregon State Parks offices. Permits cost \$10 per vehicle and are valid for two years. A vendor fee of \$0.50 may be added to the price of ATV permits sold by retailers. More details about ATV permits are available on the Oregon State Parks ATV Program webpage: www.oregonOHV.org

Reciprocity for Out of State Permits

Valid ATV/OHV permits that are issued in another state are accepted for use in the state of Oregon if the issuing state also honors an Oregon ATV operating permit. For details view the Oregon State Parks ATV Program webpage.



Your ATV Funds At Work

The Oregon ATV Program allocates money obtained from the sales of ATV permits and from a designated portion of state gas taxes through grants for ATV projects across Oregon. In the Tillamook State Forest, ATV funds are used to maintain and develop OHV staging areas, trails, and trail bridges and to purchase trail signs and purchase trail maintenance equipment. ATV grants also provide partial funding for law enforcement officers that patrol the forest.



ATV & Motorcycle Safety Courses

On-line Safety Training (required for all Class I and III operators)

The Oregon Parks and Recreation Department ATV Safety Education Course is online at www.rideATVoregon.org and it's free! This course provides safety tips for riding in Oregon's dunes, deserts and forests as well as training on trail etiquette, riding ethics and environmental concerns. Passing the online ATV Safety Education Course is an easy way to receive the ATV Safety Education Card required for all operators of quads and motorcycles. Previous ATV Safety Institute or Motorcycle Safety Foundation Operator Permit holders will also need to take this course. For youth under the age of 16, this course is step one. Step two is hands-on training.

Hands on Training (required for operators 15 and under)

ATV and Motorcycle Safety courses are available to help develop or evaluate rider skills. For information about motorcycle and ATV safety training courses check the Oregon State Parks website at www.oregon.gov/oprd/ATV/pages/Hands_on_training.aspx.

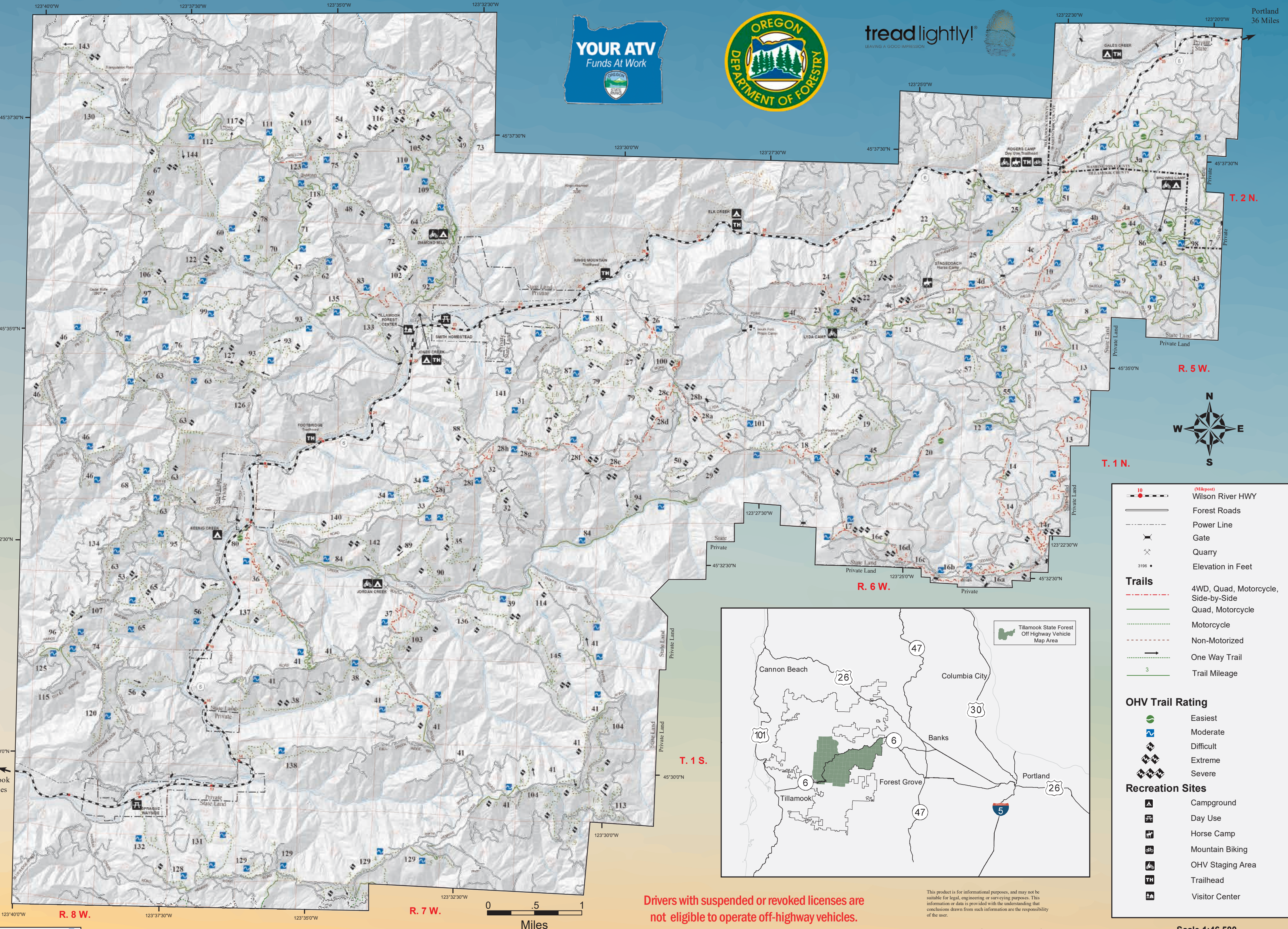
If you have questions about the ATV Safety Education Card call the ATV toll free hotline at 877-772-3359.



Motorcycle, Quad, 4WD and Side-by-Side Trails

- | ID # | Name | Difficulty |
|------|-----------------------|------------|
| 1 | Roger's Camp Road | [Symbol] |
| 2 | Firebreak One | [Symbol] |
| 3 | Crooked Bridge | [Symbol] |
| 3a | Marks | [Symbol] |
| 4 | Powerline | [Symbol] |
| 4b | Happy Meal | [Symbol] |
| 4c | Little Rubicon | [Symbol] |
| 5 | Blackbuster | [Symbol] |
| 6 | Brown's Powerline | [Symbol] |
| 7 | Clydes | [Symbol] |
| 8 | Julies | [Symbol] |
| 9 | Sidewinder | [Symbol] |
| 10 | University Firepower | [Symbol] |
| 11 | Elmers | [Symbol] |
| 12 | Gummy Worm | [Symbol] |
| 13 | Cedar Tree | [Symbol] |
| 14 | Firebreak Five | [Symbol] |
| 14r | Crushers | [Symbol] |
| 15 | Island | [Symbol] |
| 16a | Saddle Up | [Symbol] |
| 16b | Dog Leg | [Symbol] |
| 16c | Waldos Way | [Symbol] |
| 16d | Airplane Hill | [Symbol] |
| 16e | Cedar Way | [Symbol] |
| 17 | 7-Up | [Symbol] |
| 18 | Hogs Back | [Symbol] |
| 19 | Tomans Knob | [Symbol] |
| 20 | Hoodraiser | [Symbol] |
| 21 | Chute | [Symbol] |
| 22 | Back to Back | [Symbol] |
| 23 | Marianna's Trench | [Symbol] |
| 24 | Bates Road | [Symbol] |
| 25 | Elliott Creek | [Symbol] |
| 26 | Ample and Alluring | [Symbol] |
| 27 | Ben Smith Loop | [Symbol] |
| 28 | Archers Firebreak | [Symbol] |
| 28a | Rocky Up Hill | [Symbol] |
| 28b | Can Opener | [Symbol] |
| 28c | Waterfall | [Symbol] |
| 28d | Rock Garden | [Symbol] |
| 29 | Morre's Maze | [Symbol] |
| 30 | Bales Creek | [Symbol] |
| 31 | Benny Hill | [Symbol] |
| 32 | Endless Bummer | [Symbol] |
| 33 | Chainbreaker | [Symbol] |
| 34 | Buckup | [Symbol] |
| 35 | Buzzards Point | [Symbol] |
| 36 | Rogers Rd. | [Symbol] |
| 37 | Stick In The Nose | [Symbol] |
| 38 | Maddogs Pumpkin Patch | [Symbol] |
| 39 | Spaur Creek | [Symbol] |
| 41 | Firefox | [Symbol] |
| 41f | Firefox | [Symbol] |
| 43 | Military | [Symbol] |
| 44 | Quarry | [Symbol] |
| 45 | Log Jam | [Symbol] |
| 46 | Reids Ridge | [Symbol] |
| 47 | Deer Quarry | [Symbol] |
| 48 | Arrowhead | [Symbol] |
| 49 | Femgully | [Symbol] |
| 50 | Bat Bridge | [Symbol] |
| 51 | K Thumb | [Symbol] |
| 52 | Beaverslide | [Symbol] |
| 53 | BFR | [Symbol] |
| 54 | Black Diamond | [Symbol] |
| 55 | Black Water 50 | [Symbol] |
| 56 | BPA | [Symbol] |
| 57 | Pink Ribbon | [Symbol] |
| 58 | Stage Rd. | [Symbol] |
| 60 | Bungee Rd. | [Symbol] |
| 62 | Cedar Jones | [Symbol] |
| 63 | Cedar Ridge | [Symbol] |
| 64 | Diamond View | [Symbol] |
| 65 | Coast Range | [Symbol] |
| 66 | Cobmaster | [Symbol] |
| 67 | Cramlets Cliff | [Symbol] |
| 68 | Cut Off | [Symbol] |
| 69 | DC | [Symbol] |
| 70 | Cedar Fence | [Symbol] |
| 71 | Deer Fence | [Symbol] |
| 72 | Odins Ridge | [Symbol] |
| 73 | West Fork Bypass | [Symbol] |
| 74 | East Tower | [Symbol] |
| 75 | Elk Wallow | [Symbol] |
| 76 | Frankenstien | [Symbol] |
| 77 | Payne | [Symbol] |
| 78 | Ginger | [Symbol] |
| 79 | Dragons Tooth | [Symbol] |
| 80 | Highway Access | [Symbol] |
| 81 | Pigtrack | [Symbol] |
| 82 | MC | [Symbol] |
| 83 | Jones Creek Rd. | [Symbol] |
| 84 | Jordan Creek | [Symbol] |
| 86 | Kids Loop | [Symbol] |
| 87 | Denny's | [Symbol] |
| 88 | Parking Lot West | [Symbol] |
| 89 | Katie's | [Symbol] |
| 90 | Marvelous Mainline | [Symbol] |
| 92 | Mikes | [Symbol] |
| 93 | Mongos Canyon | [Symbol] |
| 94 | Doughboy Meets Dirt | [Symbol] |
| 95 | Muesial Creek | [Symbol] |
| 96 | North Tower | [Symbol] |
| 97 | Old Cedar Creek | [Symbol] |
| 98 | One Way | [Symbol] |
| 99 | Outback | [Symbol] |
| 100 | Lyda Hill | [Symbol] |
| 101 | Lyda Split | [Symbol] |
| 102 | Salans Slide | [Symbol] |
| 103 | Purple Bug Stump | [Symbol] |
| 104 | Radio Silence | [Symbol] |
| 105 | Pine Tree | [Symbol] |
| 106 | Cedar Hump | [Symbol] |
| 107 | Relay Ridge | [Symbol] |
| 108 | Rickety Bridge | [Symbol] |
| 109 | Wait n Gene's | [Symbol] |
| 110 | Plastic Downhill | [Symbol] |
| 111 | Tri Loop | [Symbol] |
| 112 | Diamond Mill Ridge | [Symbol] |
| 113 | Schwarz's | [Symbol] |
| 114 | Skidmark | [Symbol] |
| 115 | South Tower | [Symbol] |
| 116 | Spiny Ridge | [Symbol] |
| 117 | Sticks and Stones | [Symbol] |
| 118 | Stumpy | [Symbol] |
| 119 | Summit | [Symbol] |
| 120 | The Continental | [Symbol] |
| 121 | Thin Wolf | [Symbol] |
| 122 | Tommy | [Symbol] |
| 123 | Truck Dent | [Symbol] |
| 125 | West Tower | [Symbol] |
| 126 | Wolf Foot | [Symbol] |
| 127 | Wolf Point | [Symbol] |
| 128 | Potato Ridge | [Symbol] |
| 129 | Hembre Ridge | [Symbol] |
| 130 | Barney Rubble | [Symbol] |
| 131 | Fawn Holly | [Symbol] |
| 132 | Kansas Creek | [Symbol] |
| 133 | Powerline 2 | [Symbol] |
| 134 | Muesial Ridge | [Symbol] |
| 135 | Cedar Creek Bypass | [Symbol] |
| 136 | Spaur Ridge | [Symbol] |
| 137 | Rogers Fox | [Symbol] |
| 138 | Yellow Post | [Symbol] |
| 140 | Angry Elf | [Symbol] |
| 141 | Parking Lot East | [Symbol] |
| 142 | The Drop | [Symbol] |
| 143 | Alpina | [Symbol] |
| 144 | Bungee Jump | [Symbol] |
| 145 | Duanes | [Symbol] |

Tillamook State Forest Off-Highway Vehicle Trail Map



Drivers with suspended or revoked licenses are not eligible to operate off-highway vehicles.

Downloadable versions of this map can be found online at www.oregon.gov/ODF/Recreation/pages/MotorizedTrails.aspx

Scale 1:46,500

Portland 36 Miles