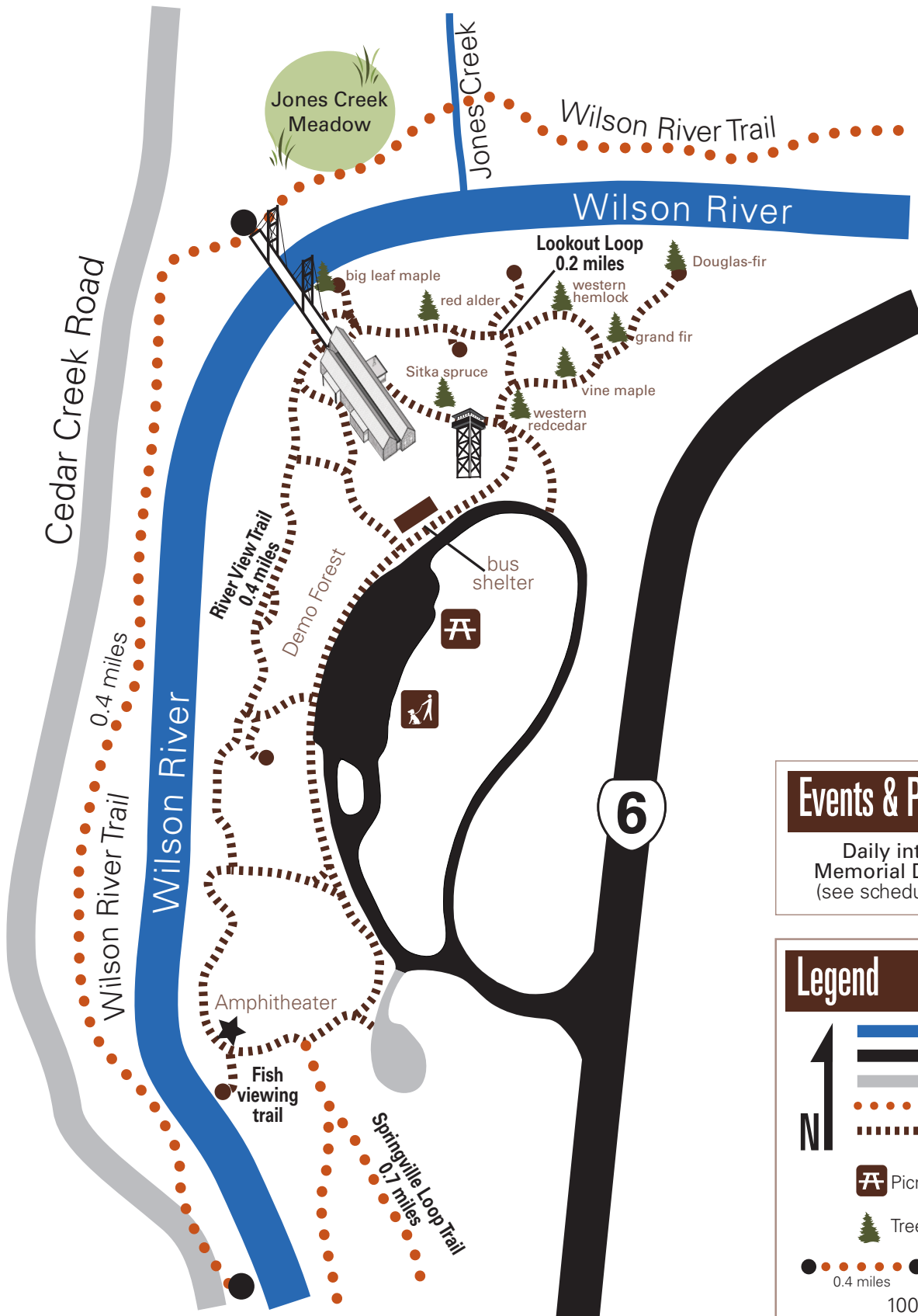


Tillamook Forest Center Site Map

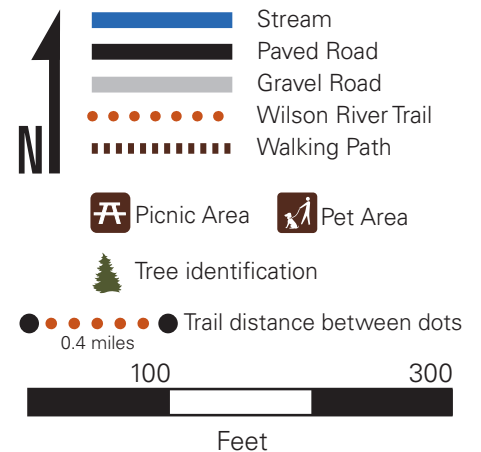


To Wilson Falls 1.7 miles from TFC bridge
To Footbridge Trailhead 3.5 miles from TFC bridge

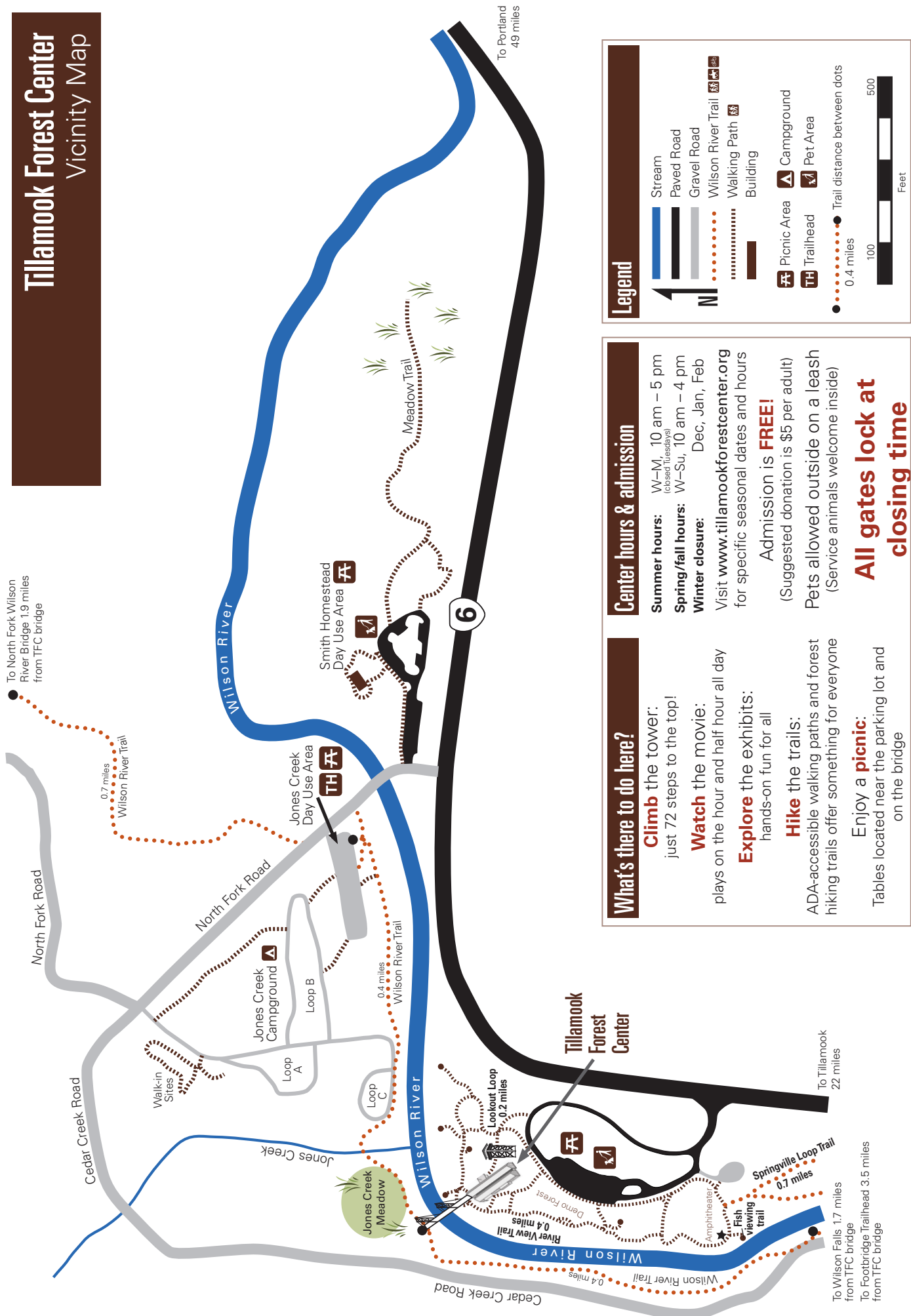
Events & Programs

Daily interpretive programs
Memorial Day through Labor Day
(see schedule posted in the center)

Legend



Tillamook Forest Center Vicinity Map



Legend

- Stream
 - Paved Road
 - Gravel Road
 - Wilson River Trail
 - Walking Path
 - Building
 - Picnic Area
 - Campground
 - Trailhead
 - Pet Area
 - Trail distance between dots
- 0.4 miles
100
500
Feet

Center hours & admission

Summer hours: W-M, 10 am - 5 pm
(closed Tuesdays)

Spring/fall hours: W-Su, 10 am - 4 pm

Winter closure: Dec, Jan, Feb

Visit www.tillamookforestcenter.org for specific seasonal dates and hours

Admission is **FREE!**
(Suggested donation is \$5 per adult)

Pets allowed outside on a leash
(Service animals welcome inside)

All gates lock at closing time

What's there to do here?

Climb the tower:
just 72 steps to the top!

Watch the movie:
plays on the hour and half hour all day

Explore the exhibits:
hands-on fun for all

Hike the trails:
ADA-accessible walking paths and forest hiking trails offer something for everyone

Enjoy a **picnic**:
Tables located near the parking lot and on the bridge